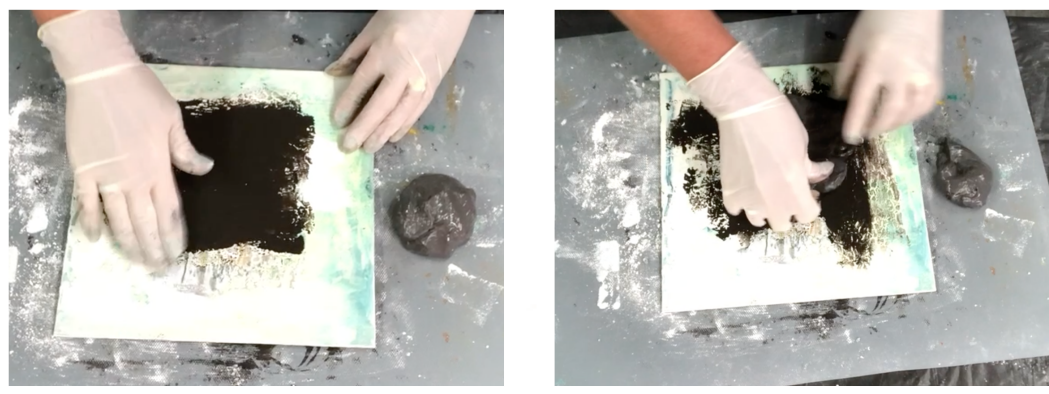


ADHESION

TEXTILES, CLAY, ... MATERIALS

TO ENSURE A PROPER ADHESION OF CLOTH, CLAY KINDS, OTHER MATERIALS, ... ALWAYS APPLY A LAYER OF POWERTEX UNIVERSAL MEDIUM ONTO A (FAIRLY) DRY SURFACE



YOU CAN USE ANY POWERTEX UNIVERSAL MEDIUM COLOR TO DO SO



EXCEPT POWERTEX TRANSPARENT IF YOUR ARTWORK IS MEANT FOR OUTDOOR EXPOSURE AND WILL NOT FINALLY BE VARNISHED

